



**SOPREMA**  
GROUP

# EXPERTS IN WATERPROOFING AND INSULATION



# SOPREMA GROUP

We strive to offer excellent service and support, listening to our customers, working closely with them, and being responsive to their requests. SOPREMA can help you achieve even the most challenging and complex designs. We offer tailored solutions in terms of protection, reliability and aesthetics, in line with the changing requirements of building designers and sustainable development.

Founded in 1908 in Strasbourg, France, SOPREMA are a family owned, global waterproofing and building envelope product manufacturer.

1908

Founded in Strasbourg under the name “Usines Alsaciennes d’Emulsions”

1909

First flagship product: Mammouth®

1941

Creation of the company Société des Produits et Revêtements d’Etanchéité MAmhout

2023

Inauguration of the new head office building, “Le Grand Charles” in Strasbourg

The SOPREMA product portfolio includes bituminous membranes, single ply membranes, structural waterproofing, liquid waterproofing, green roofs and blue roofs, acoustic soundproofing, thermal and natural insulation, civil engineering waterproofing products, swimming pool liners and all ancillary roofing and waterproofing products and accessories, all of which are covered under a single point warranty with additional insurance backing.

Many of our systems are Broof(t4) compliant and have been designed for both new build and refurbishment projects. SOPREMA offers a range of technical services to compliment the systems we provide, including calculations, CAD, BCAR and on-site support. Working with a manufacturer like SOPREMA, with an in-house technical team of experts, years of industry knowledge and contractor training, will ensure the correct system will be installed for your project that will achieve the project specifications and a sustainable and energy-efficient result.

## A GLOBAL FOOTPRINT

+10,000

employees worldwide including 4,970 in France in 2022

+100

production facilities around the world

Insulation - Waterproofing - Recycling - Smoke extraction - Steel structures - Timber frames - Sealants & adhesives - Geotextiles, etc.

120

subsidiaries all over the world.

22

Training centres in 8 countries

23

Research & Development Centres

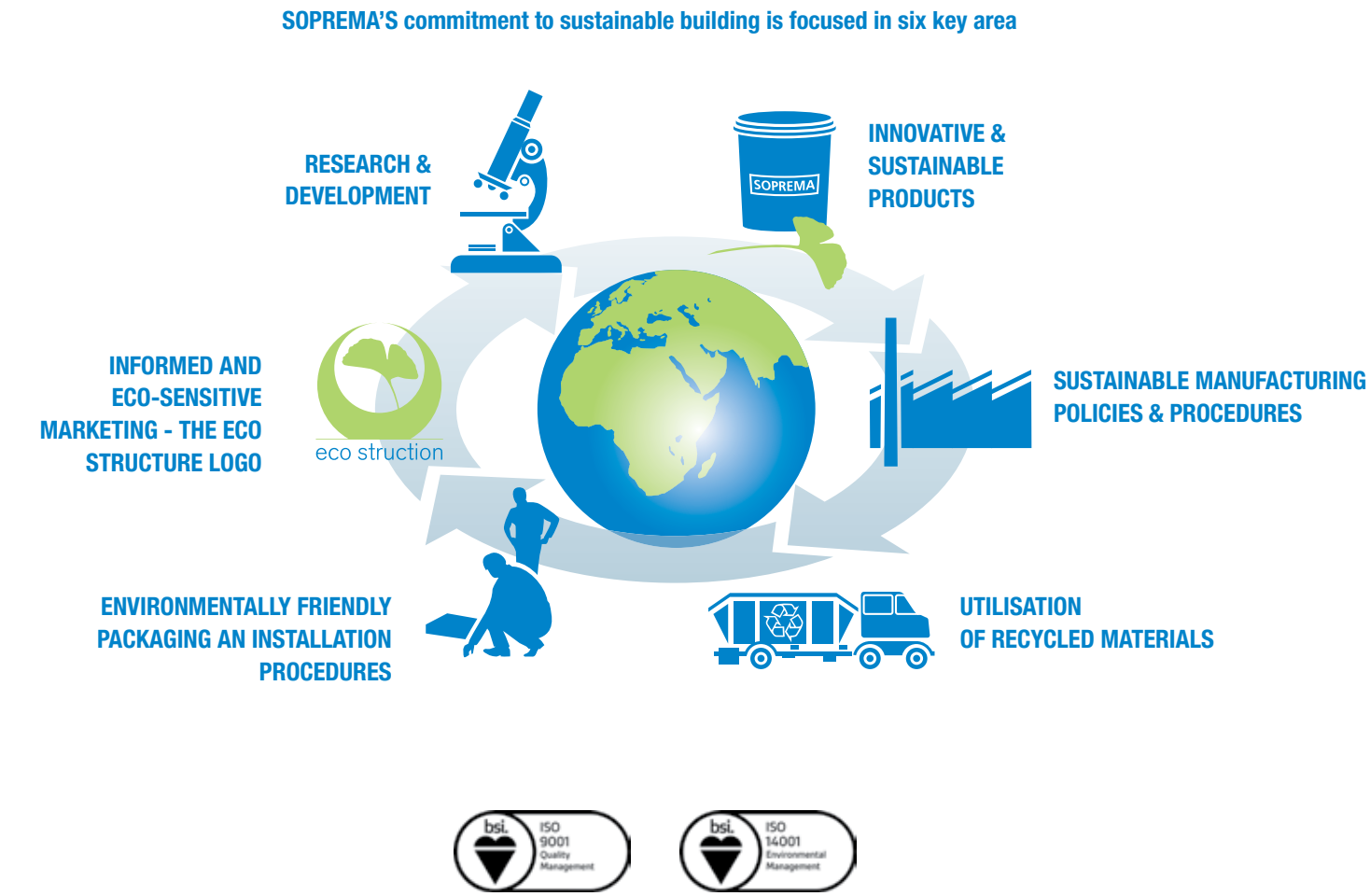
80

Patents maintained and updated

# BUILDING FOR SUSTAINABILITY

Fossil resources are becoming increasingly scarce and will one day run out altogether. Climate change is accelerating and biodiversity is in free fall. Which is why SOPREMA, a responsible industrial concern and precursor, has always sought to develop its range with responsible new systems and solutions. Our objective today: to replace 65% of our petroleum-based raw materials with eco-sourced materials from recycling or the biomass.

Eco-design is therefore the key to developing our product range. Our various research & development centres work actively to that end each and every day, by focusing on creating innovative, sustainable building products that are at the leading edge of building technology.



SOPREMA has always led the way in sustainable manufacturing, becoming ISO 9001 registered in 1996 and the first company to be certified ISO 14001 in 1997. The ISO 14001 standard ensures continuous improvement including:

- designing new plants and facilities to be more energy efficient,
- equipping the roofs with solar power technology,
- installing tri-generation processes which optimises gas consumption by producing simultaneously heat, cold and electricity.

We also follow the Global Reporting Initiative (GRI) standards.

SOPREMA has taken action to control the energy used in all plants by heavily investing every year to reduce the environmental impact of its production activities.

Our eco-friendly plants significantly reduce waste through innovations such as the recycling of manufacturing waste and using rainwater for the cooling of machinery. The plants are also strategically located to minimise our carbon footprint and provide faster delivery times.

Our eco-responsibilities also relate to the appropriate management of our plants. This includes high-tech equipment, rational organisation of logistics, waste hunting, exploitation of renewable resources, reduction and recovery of waste, limitation of rejects and choice of respectful suppliers.

Our manufacturing plants are located around the world: so each plant has its own environmental action plan to suit the local area where they are based.



# KEY SUSTAINABLE ACTIVITY

**With over a century of internationally acclaimed innovations, SOPREMA can offer the best change to waterproofing and insulation solutions using expertly designed products.**

Our high-quality products anticipate the changing needs of our customers; our components and application methods are designed with the environment and people in mind. SOPREMA is a pioneer in many fields and our strategy and choices are driven by a dedication to innovation for the greater welfare of all.

## SOME KEY EXAMPLES OF OUR SUSTAINABLE ACTIVITY:

- 2,500 tonnes of recycled oil are used in our bituminous membranes.
- Self-adhesive products are made from a by-product of colza oil and pine resin – up to 300 tonnes.
- Rainwater used to cool machinery at our plants.
- Environmentally responsible packaging.
- More than 90,000t of wood used for thermal insulation products.
- More than 15 patents filed on eco-sourced materials.
- More than 3000t of complex PET packaging recycled to create polyols for XPS insulation.
- Sopraloop process receives “Efficient Solutions” endorsement from the Solar Impulse Foundation
- X Crusher and X Loop projects for recycling bituminous waste materials from production and building sites
- In 2019, 200,000 tonnes of raw material was sourced in the circular economy and re-used in production of products.
- Membrane reinforcements made from 75% recycled plastic bottles or recycled glass fibre used in bituminous membranes.



## SUSTAINABLE PRODUCTS

We design our products with the aim of reducing the use of solvents and harmful chemicals, reducing CO2 emissions, improving user-friendliness and safety and utilising our planet's natural resources to water sun and wind.

# PRODUCTS

## BITUMINOUS MEMBRANES

Today's membranes boast exceptional performance in terms of strength, resistance and service life. In addition to their superior performance characteristics, SOPREMA bituminous membranes complement all forms of architecture, through new technology and countless finishes.



## LIQUID WATERPROOFING

ALSAN is a range of rapid curing, cold applied PMMA and PU liquid resin products that offer cost effective, load bearing, high performance and seamless waterproofing and surfacing benefits for a host of applications, including balconies, terraces, car parks, upstands and roofing applications.



## SYNTHETIC WATERPROOFING

FLAG PVC and TPO waterproofing membranes represent a new generation of synthetic membranes made with innovative formulations. Development of these membranes has been based on experience and industry leading manufacturing technologies.



## STRUCTURAL WATERPROOFING

The DUOFLEX structural waterproofing system is a bituminous hotmelt system which provides a strong, durable, flexible, lightweight, and self-healing monolithic barrier to the transmission of water and water vapour, offering longevity to the lifetime of a structure.



# PRODUCTS

## THERMAL INSULATION

SOPREMA offer solutions for world class thermal insulation, including SOPRA XPS and SOPRATHERM PIR Polyisocyanurate boards. Both solutions can be used in foundation walls, flat roofing, pitched roofing, floors and walls and parking.



## ACOUSTIC SOUNDPROOFING

The TECSOUND acoustic soundproofing has been designed to combat both impact and airbourne noise, with applications ranging from metal decks, floors, ceilings, walls, waste water pipes/drain pipes and in all sectors, both residential and commercial. In some systems, they can also be used as a vapour control layer.



## NATURAL INSULATION

PAVATEX thermal insulation systems have a unique performance spectrum, protecting against cold, heat and noise. They are simultaneously vapour permeable yet airtight so they are the ideal components for the modern building envelope. All PAVATEX products are ecologically high quality and have an EPD product declaration as well as a PEFC certificate.



## SUSTAINABLE & FUNCTIONAL ROOFS

Soprema offers green roofs, blue roofs and Soprasolar PV fixing systems to be used in combination with our waterproofing systems. The solutions are the perfect way to create sustainable buildings and make use of otherwise wasted space. A full design service is also available at the onset of any project.

# REFERENCES



TOLLYMORE OUTDOOR CENTRE



OISIN HOUSE



PRIORY HOUSE



DAA HOUSE



BALINTEER EDUCATE TOGETHER SCHOOL - IMAGE COURTESY OF BAM IRELAND



**SOPREMA** at your service:

Do you have a question about a specific project, the products or application possibilities? Then contact our technical team.

All information can be found on:  
**WWW.SOPREMA.IE**

**SOPREMA IE**

Unit 75  
Cookstown Industrial Estate  
Tallaght  
Dublin  
D24 DC98

Tel : 01 405 77 96  
info@soprema.ie  
www.soprema.ie

